

Card And Tag

ZKLT-E



- ID Location Tag installed at Checkpoints for guard tour monitoring system

ZKLT-M



- Mifare Location Tag installed at Checkpoints for guard tour monitoring system

ID card(thin)



- 125kHz Proximity Card
- Read only

ID card(Thick)



- 125kHz Proximity Card
- Read only

ID card(long range)



- 125kHz Proximity Card
- Read only
- Suitable for KR1000 for 60cm reading range

Mifare card(S70)



- 13.56Mhz Mifare One Card
- Standard MF1 S70(4 Kbyte) EEPROM

Mifare card(S50)



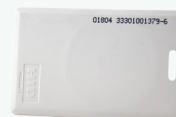
- 13.56Mhz Mifare One Card
- Standard MF1 S50(1 Kbyte) EEPROM

HID Card(thin)



- 125kHz HID proximity card

HID Card(thick)



- 125kHz HID proximity card

TAG-03(ID)



- 125KHz Proximity TAG

TAG-03(Mifare S50)



- 13.56MHz Proximity TAG

TAG-03(Mifare S70)



- 13.56MHz Proximity TAG

TAG-04



- Watchband 125KHz Proximity TAG
- Color: Blue
- Diameter: $\Phi 65\text{mm}$

NFCTag



- Frequency: 13.56MHZ
- Dimension: Tag $\Phi 25$, antenna $\Phi 19$
- storage capacity: 168byte



ZKTeco Inc.
E-mail: sales@zkteco.com
www.zkteco.com

© Copyright 2014. ZKTeco Inc. ZKTeco Logo is a registered trademark of ZKTeco or a related company. All other product and company names mentioned are used for identification purposes only and may be the trademarks of their respective owners. All specifications are subject to change without notice. All rights reserved.

